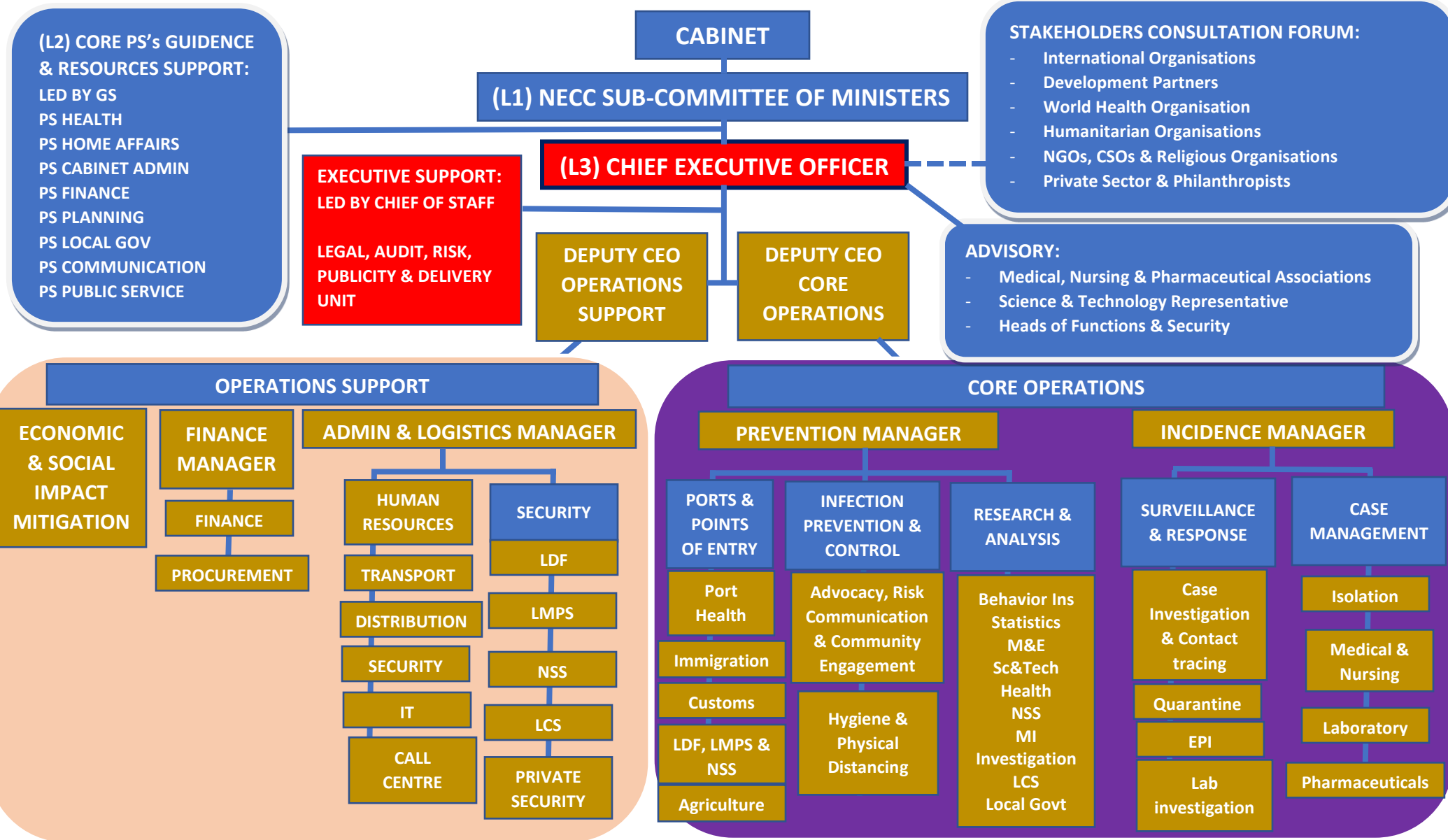


LESOTHO COVID-19 NATIONAL EMERGENCY COMMAND CENTRE (NECC) GOVERNANCE STRUCTURE



(L2) CORE PS's GUIDANCE & RESOURCES SUPPORT:
 LED BY GS
 PS HEALTH
 PS HOME AFFAIRS
 PS CABINET ADMIN
 PS FINANCE
 PS PLANNING
 PS LOCAL GOV
 PS COMMUNICATION
 PS PUBLIC SERVICE

EXECUTIVE SUPPORT:
 LED BY CHIEF OF STAFF
 LEGAL, AUDIT, RISK,
 PUBLICITY & DELIVERY
 UNIT

STAKEHOLDERS CONSULTATION FORUM:

- International Organisations
- Development Partners
- World Health Organisation
- Humanitarian Organisations
- NGOs, CSOs & Religious Organisations
- Private Sector & Philanthropists

ADVISORY:

- Medical, Nursing & Pharmaceutical Associations
- Science & Technology Representative
- Heads of Functions & Security

